

282

BAR CHART & CPM SCHEDULE E-Tender No.18/2016-17/SE/PHC/PKD

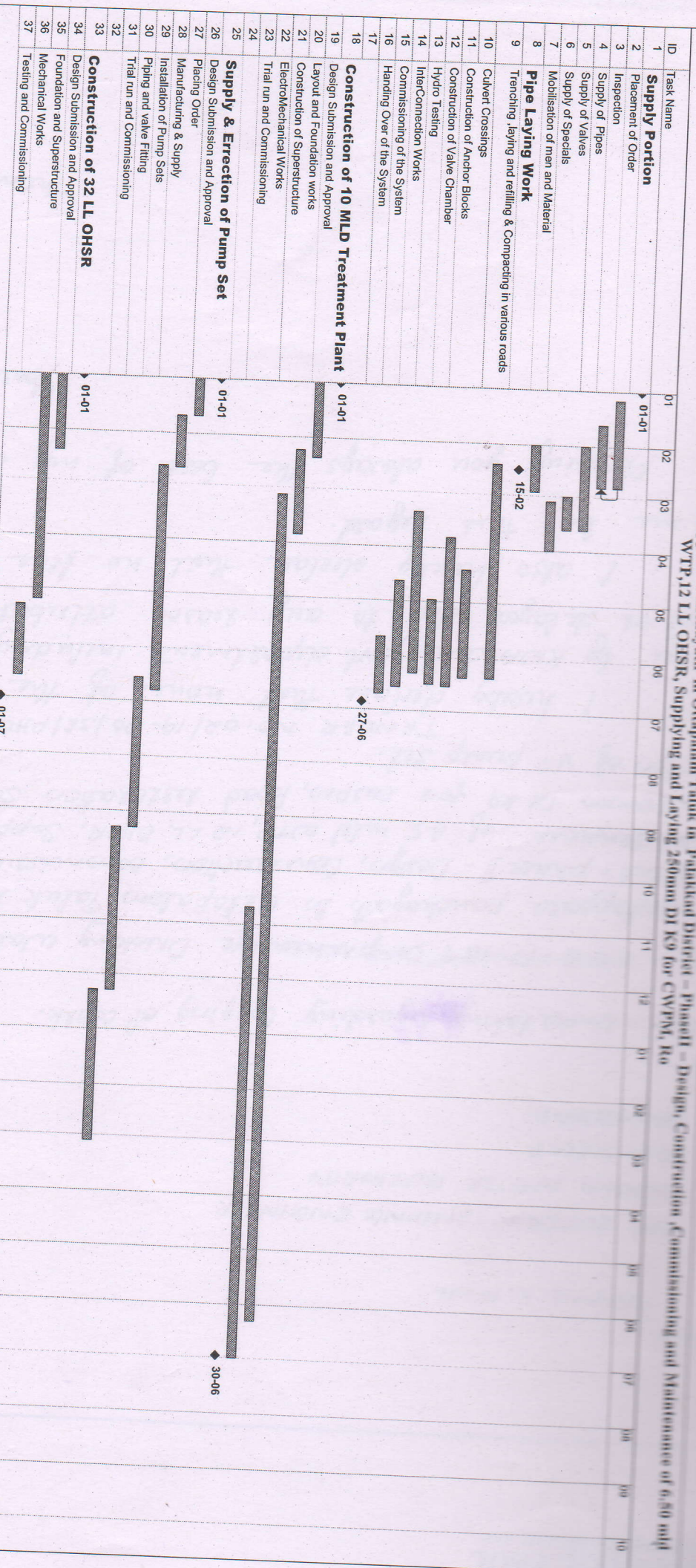
KIIFB - SIP - WSS Ambalappara panchayath in Ottapalam Taluk, Palakkad District - Phase I - Design, construction, commissioning and maintenance of 8.5 LL OH Tank and, construction of pump house, supplying, laying, testing, commissioning and maintenance of pumping main and distribution pipes using 350mm DI K9, 300mm DI K9, 250mm DI K9 and 150mm DI K9, supply and erecting clear water pump set, transformer etc.

SL. NO.	DESCRIPTION	MONTH WISE													
		1	2	3	4	5	6	7	8	9	10	11	12	next 1 year	
1	Supply of Pipes and Specials, Valves etc;														
2	Pipe laying, Trenching, back filling etc.														
3	Construction of OH Tank														
4	Construction of valve camper, ancor block, Push through & Thodu corssing														
5	Supply & erection of pump set & Transformer														
6	Testing And Commissioning														
7	Operation & Maintenance														



KIIFB - 17-18 Comprehensive Drinking Water Scheme to Ambalappara Panclayath in Ottapalam Taluk in Palakkad District - Phase II - Design, Construction, Commissioning and Maintenance of 6.50 mld

WTP, 12 LL OHSR, Supplying and Laying 250mm DI K9 for CWFNI, RO



THOMAS K PAUL