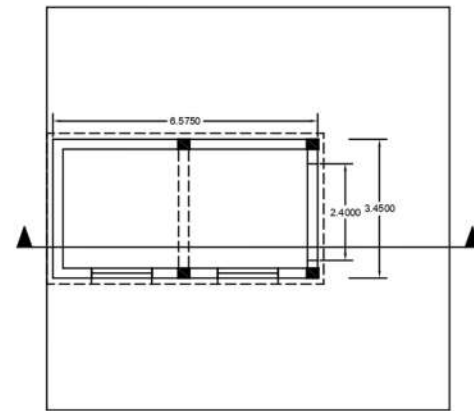
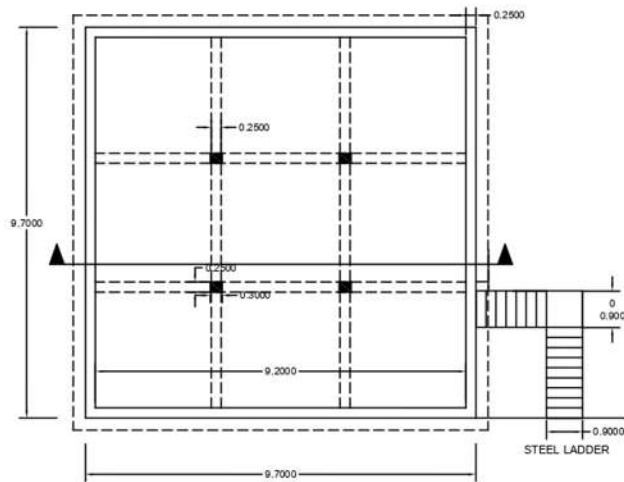
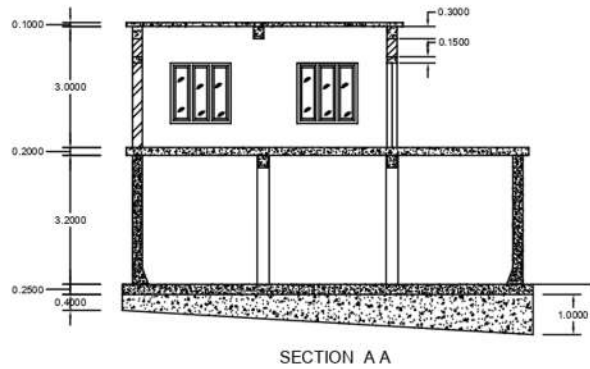



2.66 L L SUMP & PUMPHOUSE AT HEROPADI ERATTAYAR




 EXECUTIVE ENGINEER
 PROJECT DIVISION
 KERALA WATER AUTHORITY
 KATTAPPANA


 Assistant Executive Engineer
 Kerala Water Authority
 Project Division
 Kattappana.

	KERALA WATER AUTHORITY
	PROJECT DIVISION KATTAPPANA
FILE NO :	SCALE:
DRG NO : SCHEME 12/1	DATE : 21/09/2022
PROJECT: JJM-PROVIDING FHTC'S TO ALLHOUSEHOLDS IN EARTTAYAR AND KAMAKSHI (PART) PANCHAYATHS IN IDUKKI DISTRICT	
ASST.ENGINEER : 